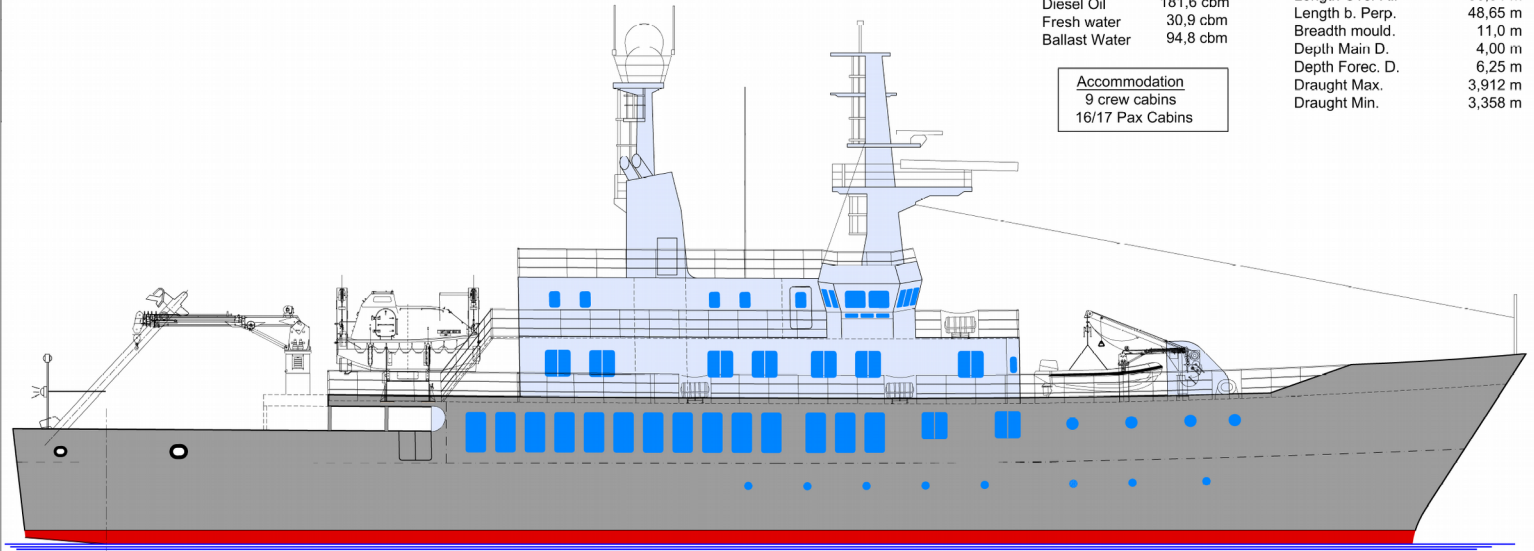


CAPACITIES:
 Diesel Oil 181,6 cbm
 Fresh water 30,9 cbm
 Ballast Water 94,8 cbm

Main Particulars:
 Length Over All 56,34 m
 Length b. Perp. 48,65 m
 Breadth mould. 11,0 m
 Depth Main D. 4,00 m
 Depth Forec. D. 6,25 m
 Draught Max. 3,912 m
 Draught Min. 3,358 m

Accommodation
 9 crew cabins
 16/17 Pax Cabins



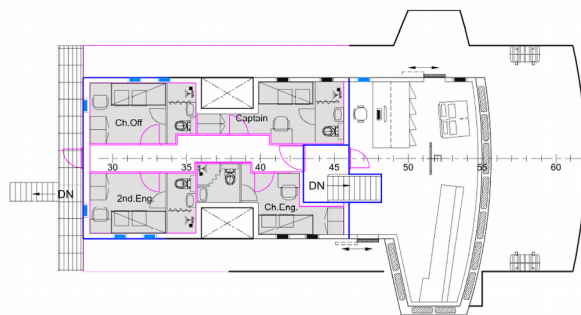
CREW ACCOMMODATION:
 Single Cab. 4
 Double Cab. 3
 Triple Cab. 2

Total 9 cabins crew /16 crew
 Crew Living Area

Number of Pax cabins: 16 /double

- (Toilets included)
- PAX Cabins Boat Deck**
- 1. 201 13,4 sqm
 - 2. 202 14,0 sqm
 - 3. 203 13,0 sqm
 - 4. 204 13,0 sqm
 - 5. 205 13,0 sqm
 - 6. 206 13,0 sqm
 - 7. 207 13,0 sqm
 - 8. 208 13,0 sqm
- PAX Cabins FC. Deck**
- 1. 101 13,0 sqm
 - 2. 102 12,3 sqm
 - 3. 103 13,0 sqm
 - 4. 104 12,3 sqm
 - 5. 105 13,0 sqm
 - 6. 106 12,3 sqm
 - 7. 107 13,0 sqm
 - 8. 108 12,3 sqm

- Pax Cabins
- Pax Recreation Area
- Pax Service Rooms

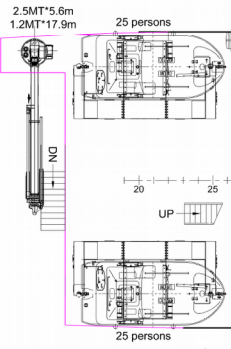


Crew Cabins

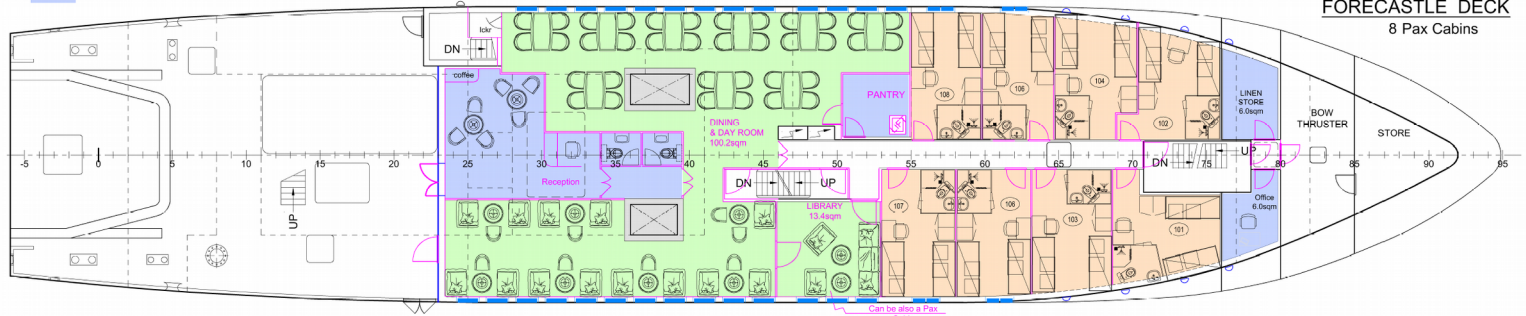
- 1. Captain 8,5 sqm
- 2. Ch.Eng. 8,5 sqm
- 3. Ch.Off. 8,5 sqm
- 4. 2nd.Eng. 8,5 sqm

BRIDGE DECK

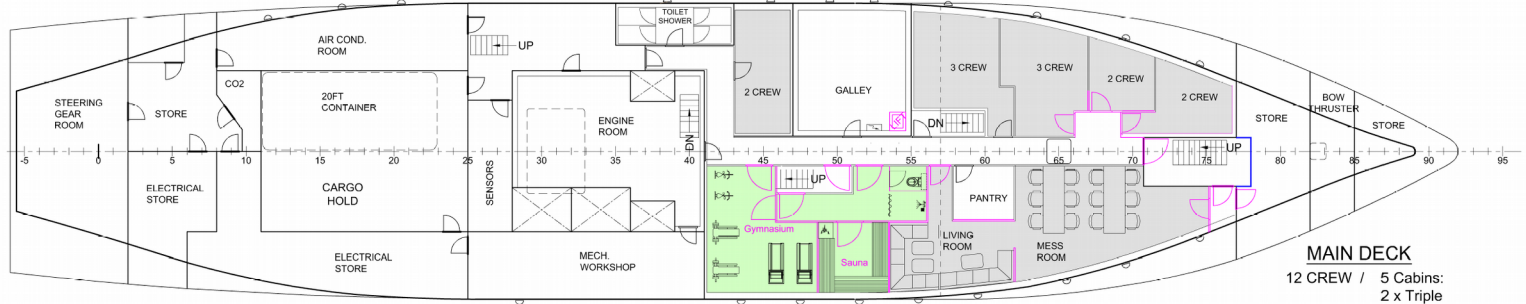
4 single Crew cabins



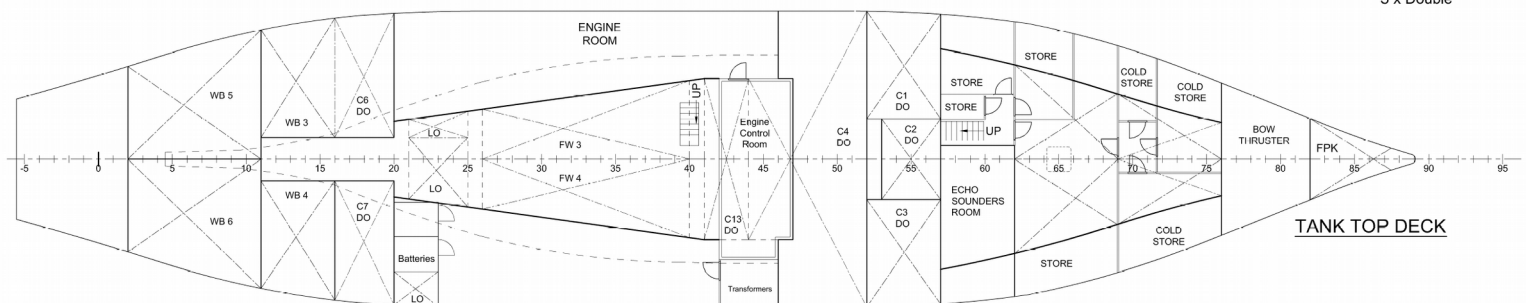
BOAT DECK
8 Pax cabins



FORECASTLE DECK
8 Pax Cabins



MAIN DECK
12 CREW / 5 Cabins:
2 x Triple
3 x Double



TANK TOP DECK